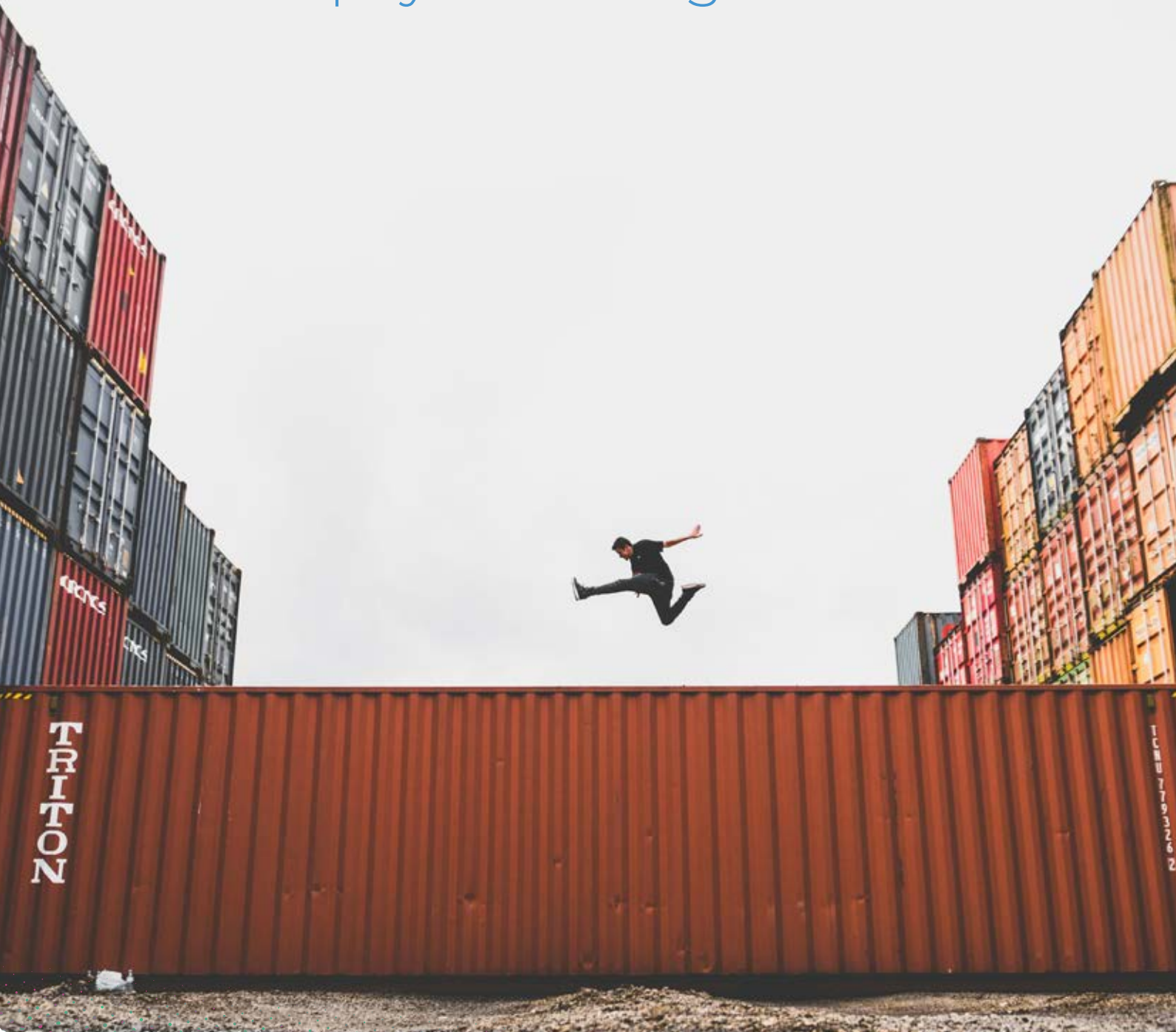
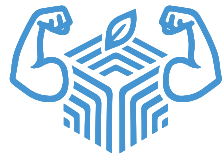


HEROPAK

Simply Moving Goods



www.heropak.io



HEROPAK

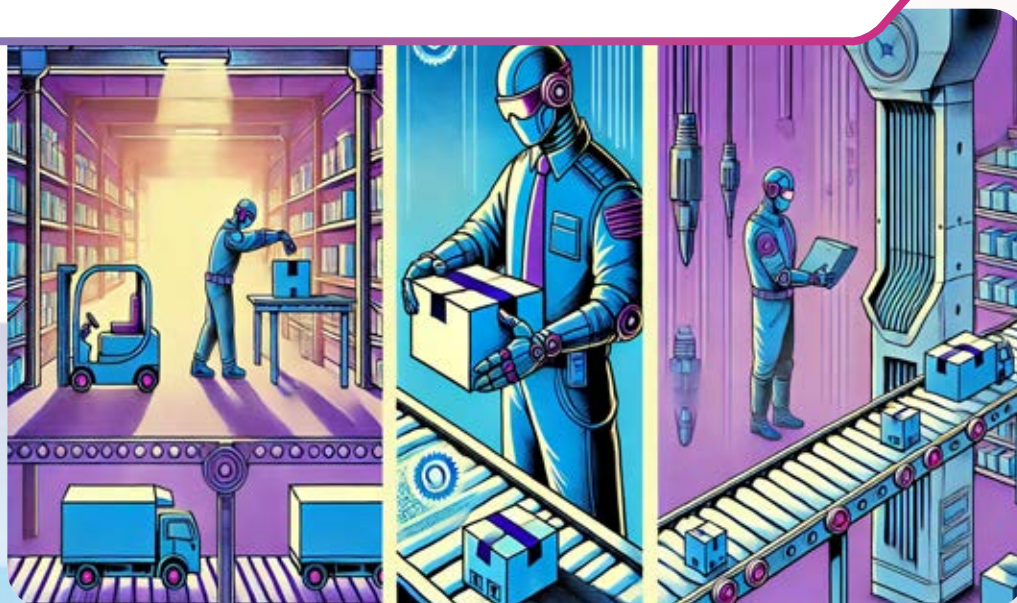
Simply Moving Goods

At **HeroPAK**, we believe that **the movement of goods is the movement of humanity**. How we move our goods will determine how we move humanity forward. This is our guiding principle which drives everything we do, from the design of our innovative packaging solutions to advancing **sustainability** in the logistics sector. We have a deep understanding of how each and every shipment carries not only products, but the potential **connect with our planet**, its people and the ability to create a better future.

For us, it's not just about developing packaging – it's about **revolutionizing how businesses approach logistics** – sustainably. Our bold vision for a circular, low-impact future is fueled by our innovative approach to crafting **customized packaging solutions** that take on single use and wasteful practices. In a world demanding efficiency and **environmental responsibility**, you can rest assured knowing that HeroPAK will be there to save the day.

In an ever changing landscape of technology, automation and digitization, **HeroPAK** understands that **real solutions begin with people**. That's why every single project begins with you in mind. Together, we take a deep dive into your business to truly understand your unique **motivations, challenges and needs**. From there we rapid prototype and implement **cutting-edge solutions** that don't just meet your expectations – but thoroughly exceed them.

With an unwavering commitment to **quality production** and our **innovative approach** to packaging, we seamlessly combine our passion for sustainability with **forward-thinking design**. This ethos enables us to lead the charge in transforming the **movement of goods** as a force for positive impact. Together, we can knock-out pollution and create solutions that are essential **for a better tomorrow**.



SAFETY

Here to Save the Day.

Prioritizing Safety for People and Operations

At HeroPAK, safety is built into every solution we create. Our products are engineered to protect workers and the public by reducing risks associated with traditional packaging methods. Every packaging solution is designed to eliminate the need for tools and can be built up or packed down in a few simple steps. This reduces risks associated with handling specialized equipment, minimizing workplace accidents.

With robust, securing solutions that prevent loads shifting during transport, HeroPAK ensures goods arrive intact while safeguarding all who come in contact with them. With a priority for safety, we empower our clients to create healthier, more secure environments for their teams and members of the community.



MISSION STATEMENT

Redefining Packaging.



Our Vision

“The movement of goods is the movement of humanity.”

We imagine a world in which the sustainable and seamless movement of goods empowers people around the world. Through innovative packaging solutions and circular economy design, we aim to transform supplychains into a force for positive impact. We’re building a future where sustainability is the beating heart of progress.



Our Mission

“To redefine packaging and logistics for a sustainable tomorrow.”

HeroPAK is on a mission to deliver solutions that go beyond expectations. With our end-to-end approach to packaging, we offer a unique service that reduces environmental impacts, enhances operational performance and increases business profit. By understanding our clients needs we can craft customized solutions that align with business goals while promoting the circular economy.



Our Values

“We value innovation, sustainability and humanity.”



Innovation: We challenge the status quo with our groundbreaking solutions that address the problems of modern logistics.



Sustainability: We are committed to reducing environmental impacts and ensure every solution contributes to a cleaner, greener planet.



Humanity: We prioritize meaningful relationships with our clients, our communities and recognize that collaboration drives our success.

WHAT WE DO

Design solutions. Create value. Deliver impact.



HeroPAK develops and delivers custom packaging solutions that increase efficiency and reduce waste throughout your supplychain. Our innovative service combines sustainability and functionality to meet the unique needs of our clients. From the design, to maintenance, recovery and recycling of your packaging, we provide a comprehensive lifecycle management service that allows you to focus on core business operations while achieving your sustainability goals.

PACKAGING AS A SERVICE (PaaS)

A New Era of Packaging.



A Smarter, Sustainable Solution.

At HeroPAK, we don't just design packaging; we deliver peace of mind. Our packaging as a service (PaaS) model redefines the traditional concept of packaging. Our service offers encompasses a fully managed, circular solution that covers the entire lifecycle of your product. From custom design and delivery to repair, recovery and recycling, we take care of every step along the way. This innovative model eliminates the need for large capital investment on our clients behalf while significantly reducing waste, enabling businesses to focus on their core operations. Our subscription based platform ensures predictable scalability, making it easy for you to adapt to your packaging needs as you grow. All while contributing to a more sustainable future.



Sustainability Meets Simplicity

Our PaaS model is designed to align with the principles of the circular economy, transforming load containment into a service that delivers environmental and operational benefits. By retaining ownership of our packaging, we ensure optimal use and end-of-life management that significantly reduce your environmental impact and rising operational expenses. Our clients benefit from reduced employee downtime, streamlined logistics, lower waste management costs, and the safer movement of goods, all while meeting their sustainability ambitions. PaaS is more than just a service – it's a partnership that empowers businesses to achieve greater efficiency, environmental compliance and reducing their environmental impact with each and every shipment.

SAVINGS

Saving More Than Just Your Planet.



Time

We streamline your operations with efficient, ready-to-use packaging solutions that eliminate the need for single-use wrapping. Our solutions reduce handling time, freeing up your team to focus on their core tasks. With lifecycle management included, we take care of maintenance and recovery, so you won't have to worry about downtime again.



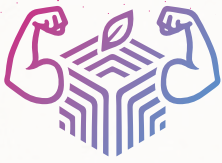
Money

Our subscription-based model eliminates upfront packaging costs, turning a major expense into a manageable operating expense. By reducing waste and ensuring durability, HeroPAK minimizes replacement costs and long-term, costly businesses expenditures. Fewer packaging-related inefficiencies mean lower labor and logistics costs for your business, not to mention the rising cost of waste management and single-use packaging purchases.



Resources

HeroPAK's reusable packaging reduces waste, keeping materials in use and out of landfills. By managing the entire lifecycle, we optimize resource use to help reduce your environmental impact. Our solutions are designed to align with your sustainability goals while improving operational efficiency and keeping up with ever-changing packaging legislation.



CLICKLOK

The ClickLOK system is designed to securely transport goods on roll containers, ensuring the safe and efficient movement of goods between distribution centers and retail outlets. The durable panels are quickly and simply secured to your existing roll container fleet and lock items in place throughout every stage of the supply chain.

The ClickLOK panels are manufactured from materials perfect for high-impact environments. Rest assured knowing your goods are secured in packaging can be reused, repaired and recycled.

Demonstrate sustainability in your business with packaging designed for the circular economy.

Patent-protected.



Custom height, width and securing options available.

Designed for fast-paced environments such as supermarket and retail chains dependant on closed-loop logistics.

Once installed, ClickLOK reduce costs associated with handling time and single-use packaging and require no additional storage space or tools for installation and use.



Variable fasteners.

Specifications

External Dimensions



1200 x 800 mm

Internal Dimensions



1200 x 800 mm

Pack Down Dimensions



10mm - leave in place

Average Weight



1.25 kg per sheet

Construction Materials



Polycarbonate, Polypropylene, Stainless Steel

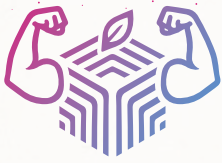
Customization



Complete customization available



Scan for more



BEASTBOX

BeastBOX is your ultimate partner when protecting your sensitive or heavy goods is a priority. From electronics to fruits such as Apples and Watermelons, this strong, collapsible box ensures durability and safety with its lockable design and customizable shelving options. Built for every day challenges it protects your goods with ease.

The lockable lid provides security for your valuable cargo. Added layer of protection reduces likelihood of theft and crimes of opportunity. BeastBOX contains your goods, locked up tight.

Adaptable and reliable with the ability to separate dangerous goods for transport.

Patent-protected.



Additional shelving options available in Polycarbonate, Plywood and MDF-engineered wood.

Securely organise what matters. This tough and trusted box is perfect for transporting dangerous and delicate goods.



Use for long term storage. Stackable units are perfect for warehousing and organisational purposes with internal dust protection.

Specifications

External Dimensions



1200 x 800 x 800 mm

Internal Dimensions



1168 x 768 x 768 mm

Pack Down Dimensions



350 mm with pallet
200 mm without pallet

Average Weight



21 kg

Construction Materials



Polycarbonate,
Wood, Stainless
Steel

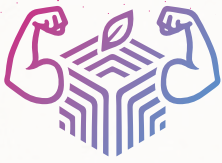
Customization



Complete
customization
available



Scan for
more



BEASTBOX-XL

BeastBOX-XL is the larger adaptation to the original BeastBOX. The height adjustable, openable and collapsible unit is perfect for transporting goods directly into the store. Securely transport goods from the warehouse directly to the point of purchase without breaking down and re-stacking shelves. As goods are removed, BeastBOX-XL can be broken down to access what is inside with ease.

The lockable lid provides security for your valuable cargo. Added layer of protection reduces likelihood of theft and crimes of opportunity. BeastBOX-XL contains your goods, locked up tight.

Significantly reduce transportation waste by eliminating multi-pallet loads with light-weight shelving units. Customizable height up to 2 meters.

Patent-protected.



Additional shelving options available in Polycarbonate, Plywood and MDF-engineered wood.

Securely organise what matters. This tough and trusted box is perfect for transporting dangerous and delicate goods.

Use for long term storage. Stackable units are perfect for warehousing and organisational purposes with internal dust protection.

Specifications

External Dimensions



1200 x 800 x 1600 mm

Internal Dimensions



1168 x 768 x 1568 mm

Pack Down Dimensions



500 mm with pallet including shelf
350 mm without pallet including shelf

Average Weight



68 kg

Construction Materials



Polycarbonate, Wood, Stainless Steel

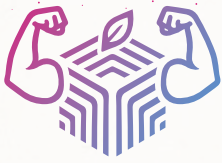
Customization



Complete customization available



Scan for more



BEASTBOX-ROLL

BeastBOXROLL is designed to roll your goods from storage to display with ease. Constructed from high strength, lightweight materials, your goods are securely contained during transport, rolled in place and displayed directly in store. Perfect for moving and displaying sensitive and dangerous goods.

The lockable lid provides security for your valuable cargo. Added layer of protection reduces likelihood of theft and crimes of opportunity. BeastBOXROLL contains your goods, locked up tight.

Lightweight materials ensures multipurpose use, from storage to waste plastic and paper collection.

Patent-protected.



Transparent display allows visual identity of internal cargo.

Perfect in industrial applications reducing time for picking and sorting goods.

Use for long term storage. Stackable units are perfect for warehousing and organisational purposes with internal dust protection.

Specifications

External Dimensions



1200 x 800 x 1750 mm

Internal Dimensions



1168 x 768 x 1500 mm

Pack Down Dimensions



400 mm

Average Weight



40 kg

Construction Materials



Polycarbonate, MDF, Stainless Steel, Polypropylene

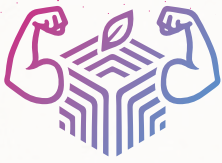
Customization



Complete customization available



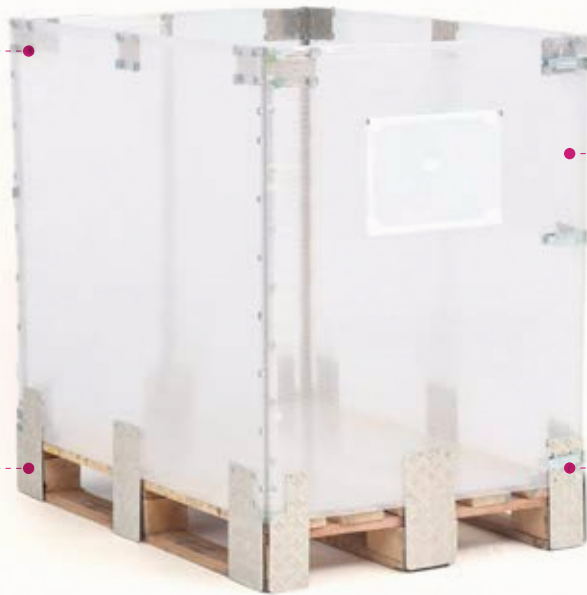
Scan for more



WRAPBOX

Single-use load security is no longer necessary, WrapBOX has you covered. When space is at a premium, you can rest assured that WrapBOX will contain your goods without taking away precious millimeters. Constructed from high-strength, lightweight materials, the single-piece, folding box holds your contents tight without compromising space, resources or the planet. Easy assembly and pack-down and foldable for easy storage.

Reusable, light-weight alternative to single-use wraps secures your goods without compromise. Perfect for loads which require all available pallet space such as energy drinks and beer containers.



Transparent display allows visual identity of internal cargo.

Customizable to your height specifications. For use with EURPAL and specific pallet situations.

Pair with the StrapLOK for additional security of your goods.



Patent-protected.

Use for long term storage. Stackable units are perfect for warehousing and organisational purposes with internal dust protection.

Specifications

External Dimensions



1200 x 800 x 1050 mm

Internal Dimensions



1180 x 780 x 1030 mm

Pack Down Dimensions



65 mm

Average Weight



8.5 kg

Construction Materials



Polycarbonate, Stainless Steel (StrapLOK optional)

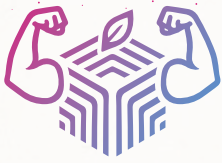
Customization



Complete customization available



Scan for more



STRAPLOK

With StrapLOK you can say goodbye to ineffective, single-use load security. Rest assured knowing your load is secured tight ensuring safety for workers and road users. The reusable strapping system is perfect for beer crates and boxes that are subject to shifts in center of gravity throughout transportation.



Reusable alternative to single-use wraps, straps and cord which do not effectively secure your goods.

Quick and easy to deploy and pack down.

Customizable to height and width specifications. For use with EURPAL and specific pallet situations.

Pair with the WrapBOX for additional security of your goods.



Patent-protected.

Reduce hazards and accidents with effective strapping of goods.

Specifications

External Dimensions



4500 mm
3700 mm

Pack Down Dimensions



1200 x 100 mm

Average Weight



8.5 kg

Construction Materials



Stainless Steel

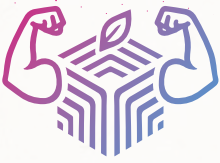
Customization



Complete customization available



Scan for more



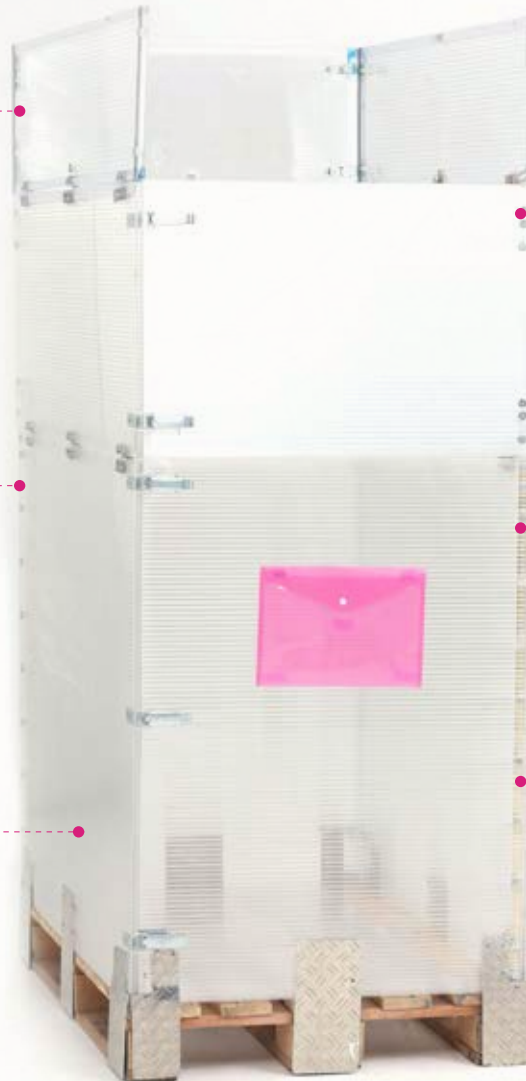
STACKPAK

With StrapLOK you can say goodbye to ineffective, single-use load security. Rest assured knowing your load is secured tight ensuring safety for workers and road users. The reusable strapping system is perfect for beer crates and boxes that are subject to shifts in center of gravity throughout transportation.

Reusable alternative to single-use wraps, straps and cord which do not effectively secure your goods.

Customizable to height and width specifications. For use with EURPAL and specific pallet situations.

Patent-protected.



Quick and easy to deploy and pack down.

Pair with the WrapBOX for additional security of your goods.

Reduce hazards and accidents with effective strapping of goods.

Specifications

External Dimensions



1200 x 800 x 2000 mm

Pack Down Dimensions



200 mm

Average Weight



15 kg

Construction Materials



Polycarbonate, Stainless Steel

Customization



Complete customization available



Scan for more



HEROPAK



GRAND GARAGE

Tabakfabrik Complex
Peter-Behrens-Platz 6, 4020 Linz, Austria
+43 676 690 6944 / +43 676 978 0855
office@heropak.io
www.heropak.io



Scan for
more